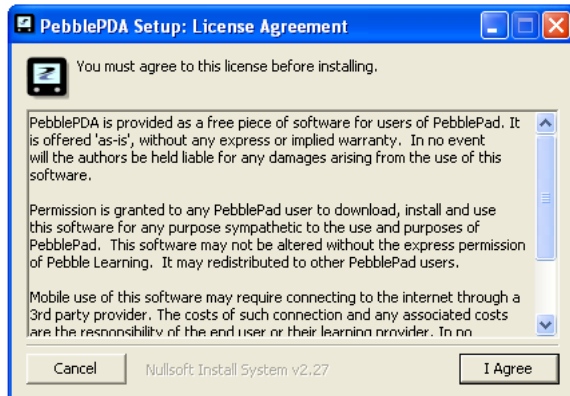


## PebblePDA

PebblePDA is a software package designed to work on Windows Mobile 2003 and later versions. It was developed as a research and development project to trial the use of mobile devices to support learner's engagement with their PebblePad ePortfolio. PebblePDA is licence free but is an unsupported product except where additional arrangements have been made with institutions.

PebblePDA is available for download from [www.pebblepad.co.uk/pebblepda](http://www.pebblepad.co.uk/pebblepda) and can be freely distributed for use by PebblePad users.

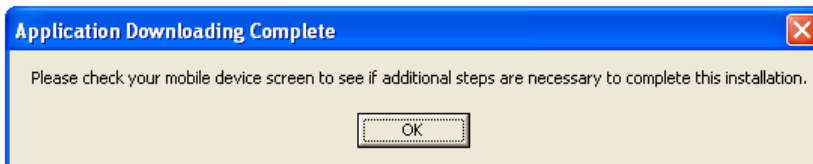


Once downloaded open the executable file and follow your normal process for loading software on to your PDA. You will have to agree to the License Agreement.

The next screen will list the components to be installed – click **next >**

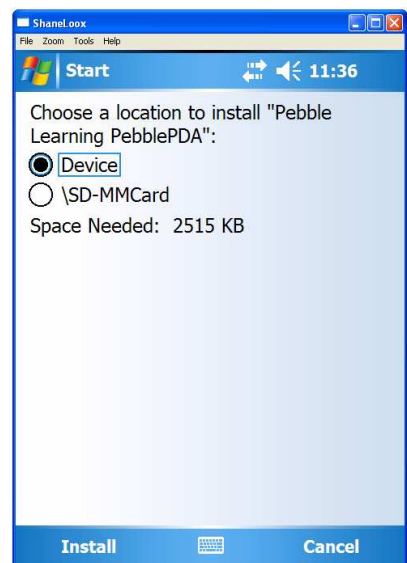
After choosing a destination folder click **Install**

PebblePDA will now begin to install itself and you will be prompted to carry out any actions on your PDA.

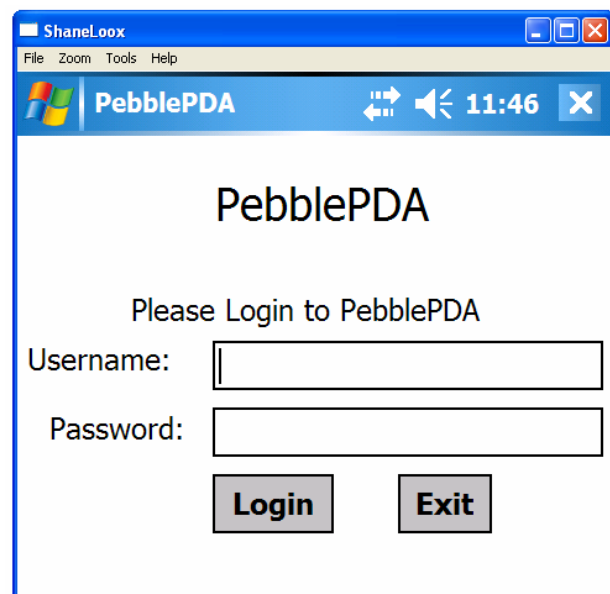
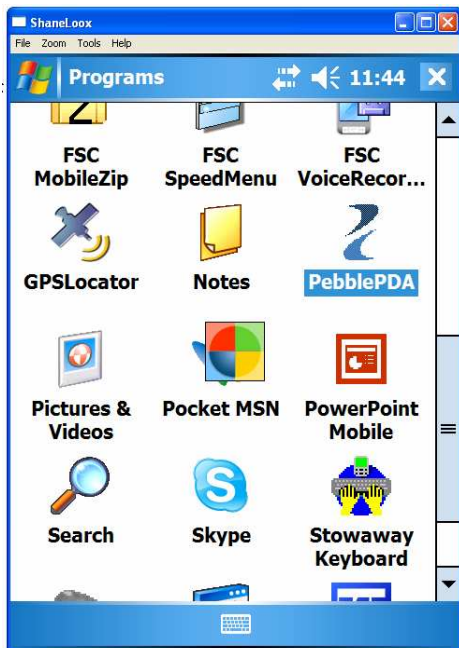


Your PDA may ask you to choose where on your device to install the software – select the appropriate location and choose **Install**

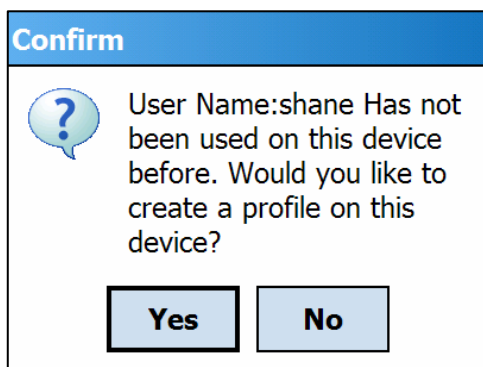
PebblePDA will now be installed on your mobile device. Once complete you will see a confirmation screen.



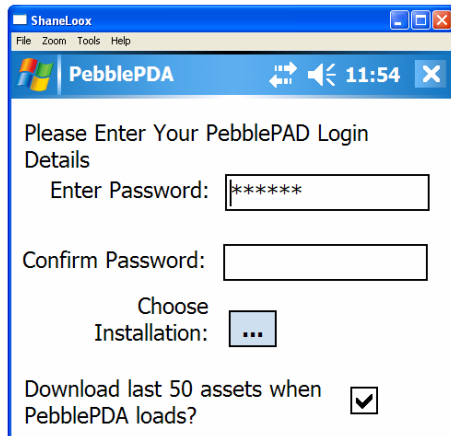
Once loaded you can access PebblePDA from the **Programs** folder.



You will then be asked to log in using your normal PebblePad username and password



The first time you log in you will have to confirm your username.



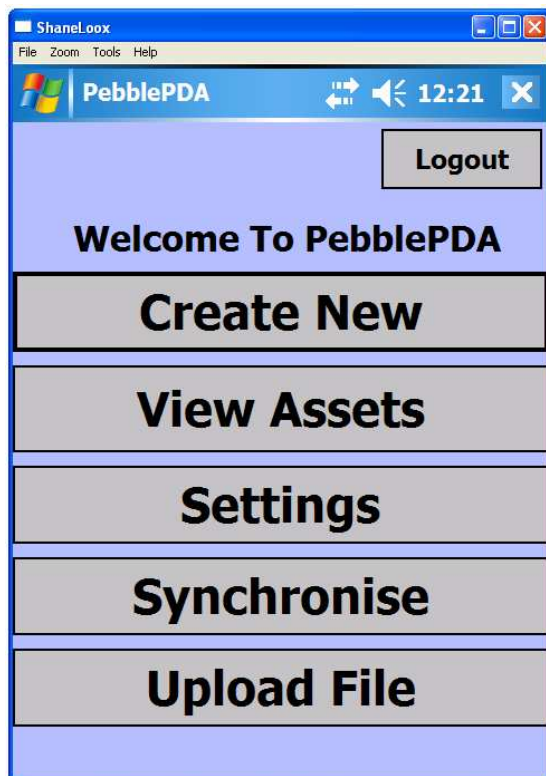
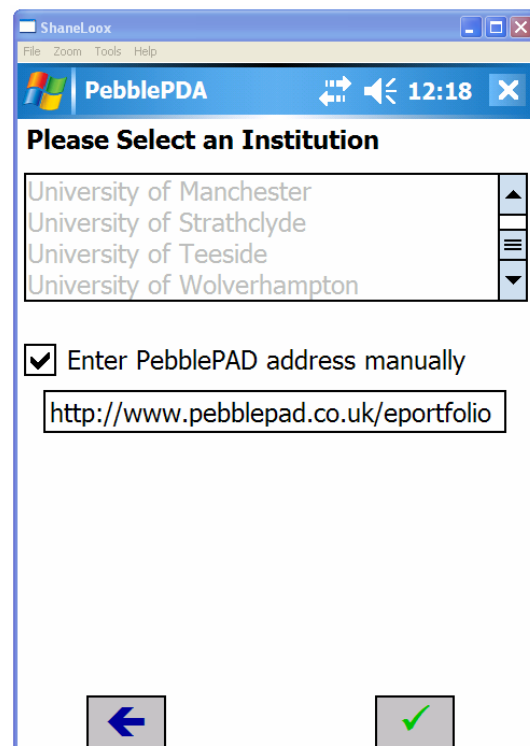
You will then be asked to re-enter your password and to choose the installation that you use.

**Note:**

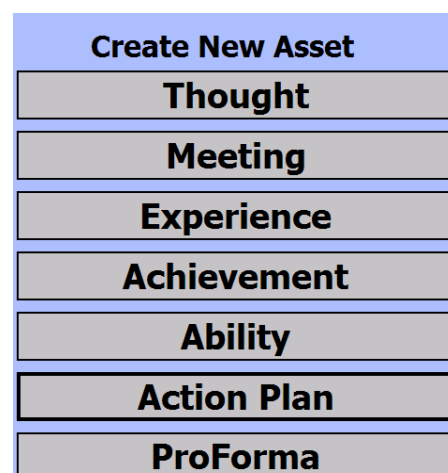
There is an option to 'Download the last 50 assets when PebblePDA loads'. Selecting this will mean that the assets on your PDA are always up-to-date but it will make connecting slower.

You can choose your installation from any in the list or manually enter the URL you normally log in from.

Click on the tick to continue.

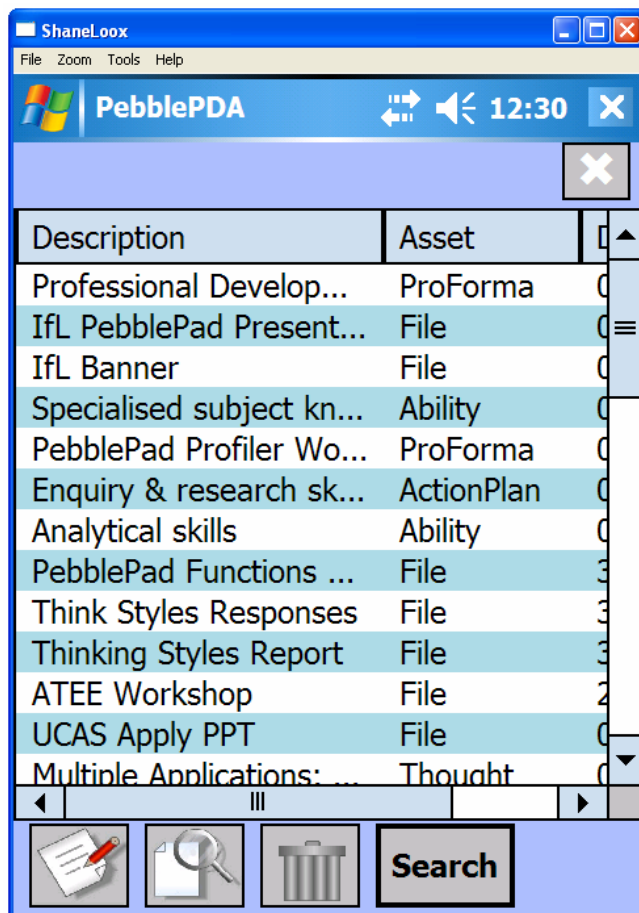


← This is the homepage of PebblePDA. It allows you to create these types of assets:



Creating assets works in a very similar way to creating them on PebblePad. You will only have access to blank proformas if they have been created and shared with you by a tutor / administrator.

Any new assets you create or any you edit will be saved locally on the PDA until the next time you synchronise your PebblePDA with PebblePad. To **synchronise** click on the synchronise button on the homepage. You must be connected to the internet directly from the PDA or via a cable/cradle to an internet connected PC to synchronise.



**Note:**

When exiting the view page click on the grey shaded cross to close the page not the one above it which closes PebblePDA

The icons at the bottom of the screen allow you to:

- **Edit**
- **View**, or
- **Delete**

a selected asset. When viewing assets the last 50 will be displayed.

You can also **search** for assets. The search tool allows you to choose between searching for items on the PDA or items on PebblePad if you are connected to the internet.

Search Area

Asset Type

Keyword

Date Created